

J  
DRAWING NUMBER S1470  
SIZE A  
SCALE: NONE  
DATE: 5-24-93  
APPROVED BY: TD  
CHECKED BY: TD  
DRAWN BY: PJ  
FIGURE NUMBER 1470, 1480

**SMITH® JAY R. SMITH MFG. CO.®**  
MEMBER OF MORRIS GROUP INTERNATIONAL™  
POST OFFICE BOX 3237  
MONTGOMERY, ALABAMA 36109-0237 (USA)  
TEL: 334-277-8520 FAX: 334-272-7396 www.jrsmith.com



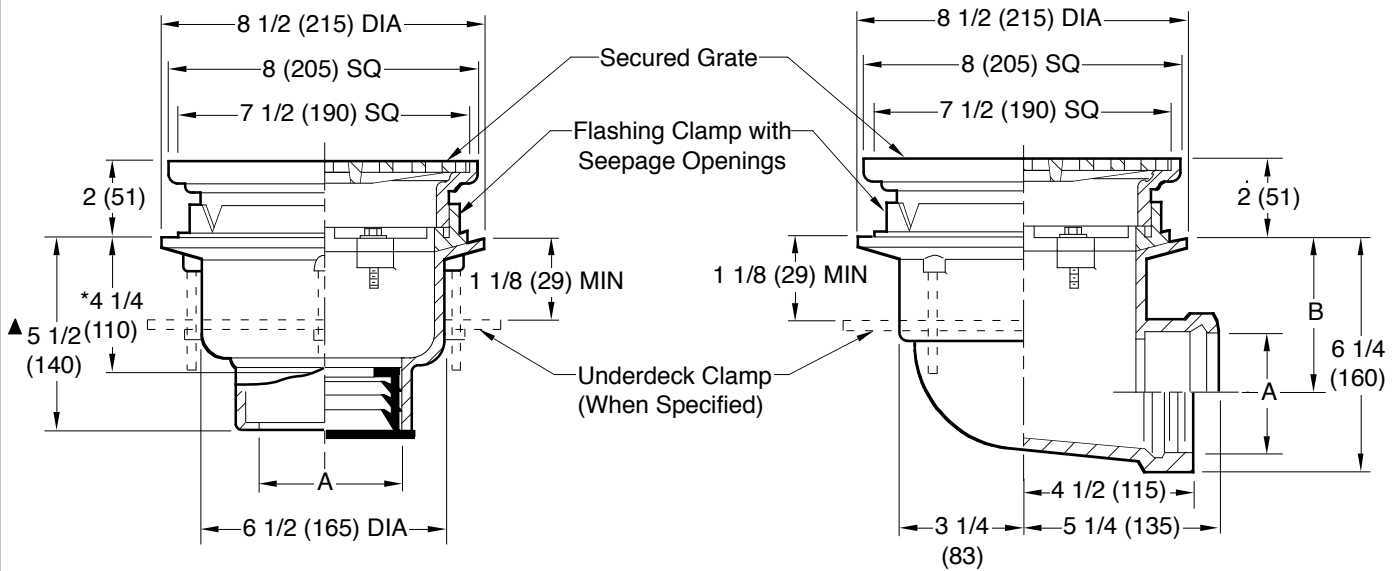
LOCATION

# PROMENADE DECK DRAINS

## SMALL - 8" (205) SQUARE

**FUNCTION:** For use in small roof areas which are designed for promenade or recreational purposes. Square top design is compatible with "block" patterns. This drain should be used for small roof areas only and where light rainfall is expected.

Free Area  
19 SQ IN  
(123) SQ CM



- Fig. 1470C . . . . CAULK OUTLET
  - Fig. 1470Y . . . . NO-HUB OUTLET
- A (Pipe Size) = 02(50), 03(75) or 04(100)

- Fig. 1480C . . . . CAULK OUTLET
- Fig. 1480T . . . . THREADED OUTLET

\*This Dimension to Internal Stop of Speedi-Set Gasket.  
▲ Same for Caulk, NO-HUB and Speedi-Set 4 1/4(110) for Threaded.

recommended deck opening	
with suffix -R	9(230) DIA
less suffix -R	7 3/4(195) DIA

<b>A SIZE</b>	02(50)	03(75)	04(100)
<b>B</b>	4 1/2 (115)	4 (100)	3 1/2 (89)

**REGULARLY FURNISHED:**  
Duco Cast Iron Body and Flashing Clamp with Seepage Openings and Secured Square Hole Light Duty Gate.

- VARIATIONS:**
- Expansion Joint (Specify Fig. 1710) (Fig. 1470 only)
  - Extension (Specify Height) -E
  - L Speedi-Set Service Weight (Fig. 1470 only)
  - LXH Speedi-Set Extra Heavy (Fig. 1470 only)
  - NO-HUB Adaptor (Specify Fig. 2646Y) (Fig. 1480 only)
  - Secondary Flashing Clamp -C2
  - Sump Receiver -R
  - Underdeck Clamp -C
  - Vandal Proof Gate -U
  - T Threaded Outlet
  - Heel Proof -HP

- OPTIONAL MATERIALS:**
- Ductile Iron Grate -M
  - Galvanized Cast Iron -G
  - Nickel Bronze Top -NB
  - Polished Bronze Top -PB

**NOTE:** Dimensions shown in parentheses are in millimeters.

**NOTE:** Floor drains or area drains, when used to drain exterior areas (subject to rainfall) should have an open area equal to twice the cross sectional area of the connecting pipe.

J H G F	8-12-14 6-25-08 11-1-02 2-5-01	Revised Drawing Rev. Variations Rev. "V" Notch Rev. Opt. Mat.	TBW TBW RN RN	CL TWK BS	WEIGHT POUNDS	VOLUME CUBIC FEET	FIGURE NUMBER <b>1470, 1480</b>
REV.	DATE	DESCRIPTION	BY	CKD. BY			

WE CAN ASSUME NO RESPONSIBILITY FOR USE OF SUPERSEDED OR VOID DATA

DIMENSIONS ARE SUBJECT TO MANUFACTURERS TOLERANCE AND CHANGE WITHOUT NOTICE