

NEOREST®

MS982CUMG

Neorest 550H Elongated Toilet/Bidet

FEATURES

- Cyclone® siphon jet flushing system, ultra-high efficiency (1.0GPF/3.8LPF and 0.8GPF/3.0LPF).
- SanaGloss® ceramic glaze - SanaGloss glaze prevents debris, and mold from sticking to ceramic surfaces, leading to fewer chemicals and less water in cleaning.
- Auto lid open/close, auto flush
- ewater+
- Convenient remote control
- Adjustable heated seat
- Adjustable spray position
- Washlet with three wash modes (front, rear, soft)
- Oscillating and pulsing comfort washing
- Energy saver timer
- Built-in air purifying system

COMPONENTS

- SN982M - Top Unit
- CT982CUMG - Elongated bowl

Note: SN982M Only compatible with CT982CUMG

COLORS/FINISHES

- #01 Cotton
- #12 Sedona Beige

PRODUCT SPECIFICATION

The Neorest 550H uses our Cyclone flushing system toilet shall be 1.0GPF/3.8LPF and 0.8 GPF/3.0 LPF. Toilet shall have SanaGloss ceramic glaze. Toilet shall be of skirted design, elongated front bowl with auto open and close seat. Toilet shall be TOTO Model MS982CUMG_____.



ewater+™
SanaGloss
CYCLONE
FLUSHING SYSTEM BY TOTO®

CODES/STANDARDS

- Meets and exceeds ASME A112.4.2, ASME A112.19.2/CSA B45.1, ASME A112.18.1/CSA B125.1, UL 1431, CSA C22.2 # 68
- Certifications: IAPMO(cUPC), State of Massachusetts, City of Los Angeles and others
- Code Compliance: UPC, IPC, NSPC, and others

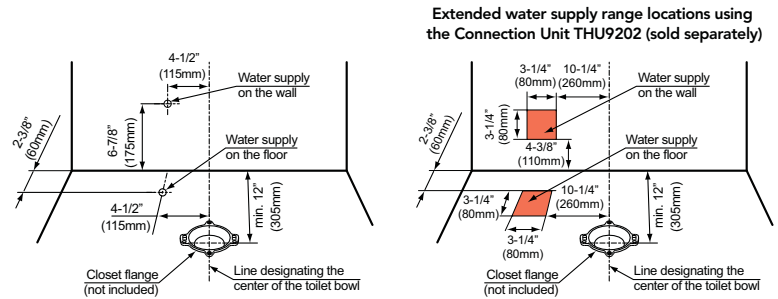
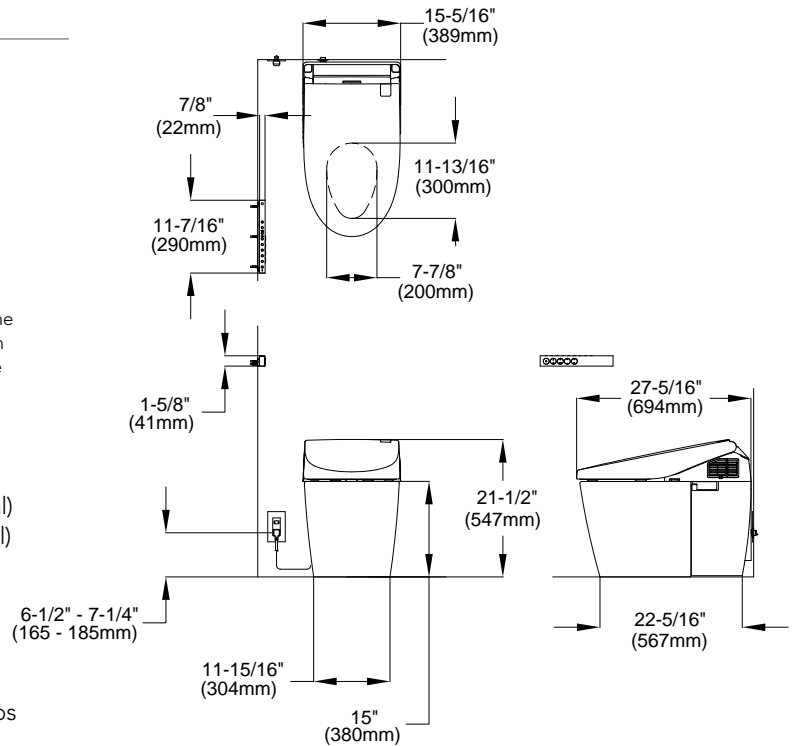


MS982CUMG

Neorest 550H Elongated Toilet/Bidet

SPECIFICATIONS

Water Use:	1.0 GPF/3.8 LPF & 0.8 GPF/3.0 LPF
Flush System:	Cyclone Siphon Jet
Water Pressure:	Min 7 PSI (0.05MPa) Flowing Max 80PSI (0.55MPa) static
Water Surface:	8-3/4" x 7-1/14"
Trap Diameter:	2-1/8" (54 mm)
Rough In:	12" rough in Warning: If there is a base board in the restroom, the center of the floor drain should be a minimum of 12" from the base board.
Trap Seal:	2-1/8" (56 mm)
Warranty:	Three Year Limited (Residential) One Year Limited (Commercial)
Material:	Bowl: Vitreous china Seat and cover: Plastic
Shipping Weight:	Top Unit - SN982M 20lbs Bowl Unit - CT982CUMG 82lbs
Shipping Dimensions:	SN982M - 17-3/4" x 30-5/8" x 11-1/2" CT982CUMG - 16-3/4" x 29-1/2" x 21-1/2"



Power Rating	120V AC, 60 Hz.1413W
Power Cord	Maximum length: 4 ft (1.2 m)
Water Feature	Adjustable Water Flow Rate Rear washing: from 9.1 to 14.5 oz/min. Soft washing: from 9.1 to 14.5 oz/min. Front washing: from 9.8 to 14.5 oz/min. Temperature of Washing Spray Minimum: 86° F/30° C Maximum: 104° F/40° C Safety Features: Temperature fuse, Bi-metal sensor (auto reset), and Float switch
Drying Feature	Air Temperature: High: About 140°F/60°C Medium: About 122°F/50°C Low: About 95°F/35°C Capacity of Air: 10.6 ft³/min Safety Feature: Temperature Fuse

Seat Warming Feature	Surface Temperature: Minimum: 82° F/28° C Maximum: 97° F/36° C Seat Heater Capacity: 50W Safety Feature: Thermal fuse
Air Purifying Feature	Method: 0 Deodorizer Air Volume: 5.5 ft³/min
Ambient Temperature Range	33°F/1°C to 104°F/40°C
Size	15.3" x 27.75" x 21.5"
Weight	Net: 85.5 lbs.

TOTO

These dimensions and specifications are subject to change without notice

Ph: (888) 295-8134 | Fax: (800) 699-4889 | www.totousa.com

Printed in U.S.A. | © TOTO USA 12/12 | Printed on recycled paper ♻️

#SS-00633 v.01