

**FLORWELL™ SERVICE SINK**

- Enameled cast iron
- 3" outlet
- Corner model

**7741.000**  
fixture only

**7745.811**  
Vinyl Rim Guard

Nominal Dimensions: 28" x 28" x 13"  
711 x 711 x 330mm

**Compliance Certifications -**

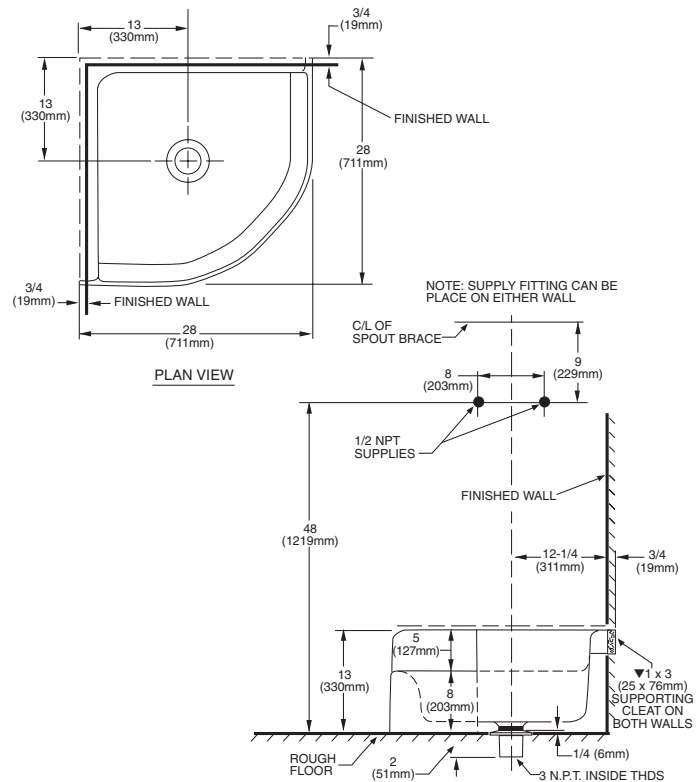
**Meets or Exceeds the Following Specifications:**

- ASME A112.19.1 for Cast Iron Plumbing Fixtures
- CAN / CSA B45 Series



**To Be Specified**

- Faucet: 8344.112 faucet with top brace, stops, and vacuum breaker
- Alternative faucet:
- Drain: 7721.038 flat grid drain
- Removable vinyl-coated rim guard: 7745.811 (black)



**NOTES:**

- ▼ PROVIDE SUITABLE REINFORCEMENT FOR ALL WALL SUPPORTS. FITTINGS NOT INCLUDED AND MUST BE ORDERED SEPARATELY.

**IMPORTANT:** Dimensions of fixtures are nominal and may vary within the range of tolerances established by ANSI Standard A112.19.1. These measurements are subject to change or cancellation. No responsibility is assumed for use of superseded or voided leaflet.