

Liberty Pumps®

SBX-Series



SumpBox®
by Liberty Pumps

With debris filter technology

*A professional
groundwater
protection system
for new home
construction*


Features:

- Fully assembled.
- Available with 1/3 or 1/2 hp pumps.
- Unique debris filter tray.
- Large 41 gallon capacity.
- Easy access cover requires no tools to open.
- Easy to service float switches located in holders under access cover.
- Available with pre-set alarm.
- Sealed covers radon-ready.



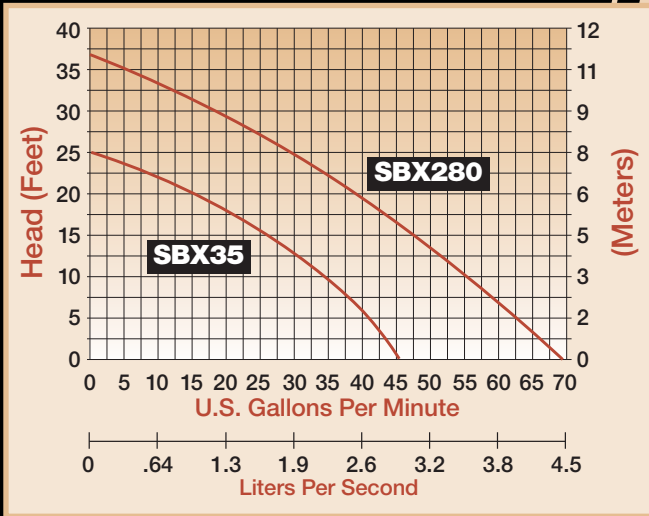
Patent #
D523,517

innovate. evolve.



SumpBox
by Liberty Pumps
With debris filter technology

Performance Curve



SBX-Series Specifications

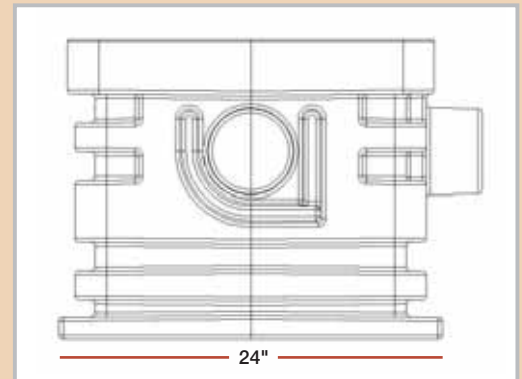
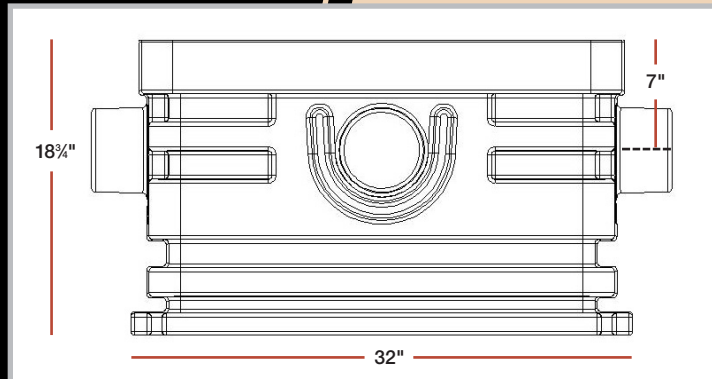
| | |
|-------------------------|---|
| Basin Material | Rotationally molded polyethylene |
| Covers and Filter Tray | Structural Foam |
| Total basin capacity | 41 US Gallons |
| Capacity per pump cycle | 9.3 US Gallons |
| Filter tray capacity | 15 US Quarts |
| Filter tray flow rates | up to 125 GPM |
| Straining | 3/16" |
| Height | 18-3/4" |
| Width | 24" |
| Length | 32" |
| Inlets | (3) integrally molded. 4" |
| Access Cover | Sealed, hand tighten fasteners |
| Pump Cover | Sealed, bolted stainless fasteners |
| Discharge | 1-1/2" female NPT |
| Vent | (Optional) 3" grommet seal, uninstalled |
| Pump options | S35 1/3hp, 115V 280 1/2hp, 115V |
| Anti-float collar | Yes |
| Alarm | (Optional) ALM-2 with vertical float |
| Construction cover | Clear, disposable |

Pre-Assembled Systems

| Model | Pump | HP | Volts | ALM-2 Alarm | GPM@10' | Maximum (shut-Off) Head | Weight |
|----------------------------------|------|-----|-------|-------------|---------|-------------------------|--------|
| SBX35-Series | | | | | | | |
| SBX35 | S35 | 1/3 | 115V | No | 35 | 25' | 50 |
| SBX35A | S35 | 1/3 | 115V | Yes | 35 | 25' | 50 |
| SBX280-Series High-Output | | | | | | | |
| SBX280 | 280 | 1/2 | 115V | No | 56 | 37' | 67 |
| SBX280A | 280 | 1/2 | 115V | Yes | 56 | 37' | 67 |

See S35 or 280-Series literature for complete pump specifications.

Dimensional Data



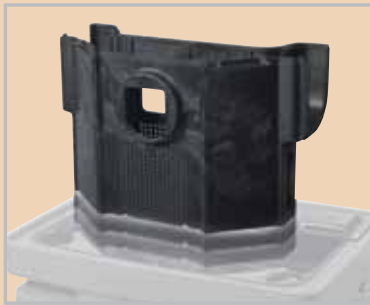
SBX-Series Features

Pre-mounted 1/3 or 1/2 hp pump secured with torque-stops

Easily serviced switches located under access cover

Safety overflow feature

Removable 15 quart filter tray



Sealed access cover requires no tools to open

Schedule 80 PVC discharge, 1-1/2" female NPT

Pump cover securely bolted with stainless steel fasteners

Gasket provides a gas-tight seal for radon installations

(3) 4" Inlets

Alarm float (optional)

Anti-float collar with "Staking" locators

Shipped with a Clear Disposable Construction cover!

Protects the system during rough-in and masonry work



Radon-Ready

Provision for 3" Vent Pipe (Pipe seal included, uninstalled)

All Radon installations should be done by a qualified professional and in accordance with applicable codes.



Rough-in and Finish Kits

Model – SBX-Rough

Rough-in kit, includes basin, filter tray, covers and clear disposable cover (no pump).

Finish Kits Everything you need to finish off an SBX-Rough. Includes pump, internal pipe and float switch. (ALM-2 alarm and switch included on "A" models.)

| Model | Pump model | HP | Volts | GPM@10' | Maximum Head | Alarm Included |
|----------|------------|-----|-------|---------|--------------|----------------|
| FKIT35 | S35 | 1/3 | 115V | 35 | 25' | No |
| FKIT35A | S35 | 1/3 | 115V | 35 | 25' | Yes |
| FKIT280 | 280 | 1/2 | 115V | 56 | 37' | No |
| FKIT280A | 280 | 1/2 | 115V | 56 | 37' | Yes |

SBX-Security Options

FKITALM

Alarm only for SumpBox. Includes ALM-2 alarm and switch pre-set for SumpBox. Alarm features 115 volt operation, 9 volt battery back-up, red alarm light and 86 db horn and low battery chirp.

FKIT441

Model 441 12 volt back-up pump system designed specifically for the SumpBox. Includes pump, piping, check valve, pre-set float switch, battery case, and 4-stage charger. (12 volt marine-grade battery not included.) See model 441 literature for complete specifications. (Note: FKIT441 includes an alarm feature. FKITALM not required when using FKIT441.)

FKIT441
Shown
installed.
Requires
assembly.



Liberty Pumps • 7000 Apple Tree Avenue • Bergen, New York 14416
Phone 800-543-2550 Fax (585) 494-1839

Specifications are subject to change without notice. Copyright © Liberty Pumps, Inc. 2010 All rights reserved. LLIT4000 R02/10