


For Residential and Commercial Applications

Job Name		Engineer / Architect	
Job Location		Wholesaler	
Submittal Date		Contractor	

S1-***A Stainless Steel Flexible Braided Faucet Water Connector - Compression Inlet

Use: For use in potable water distribution systems in accessible locations only

Design Features:

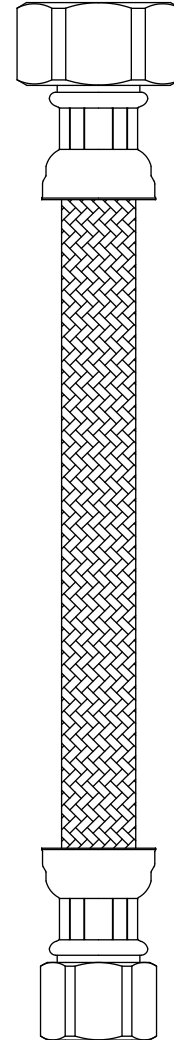
- **Tough inner core** is reinforced to resist chlorine and chloramine leaching and deterioration
- **Plated brass nuts** for durability
- **Rubber washer** ensures a universal fit and long lasting water-tight connection
- **8-sided pneumatic crimp** ensures reliable nut-to-hose connection
-  **No Lead**

Operating Specifications:

Temperature: 40°- 140° F, intermittent to 180° F

Pressure: 125 PSI maximum

Tube Diameter: 0.300" ID (0.550" OD)



MATERIAL SPECIFICATIONS

Inner Hose	Reinforced PVC
Braiding	Stainless steel wire
Barb	Brass
Ferrule	Zinc plated steel
Nut	Brass
Washer	Rubber
Compression Nut	Brass

Part Listing:

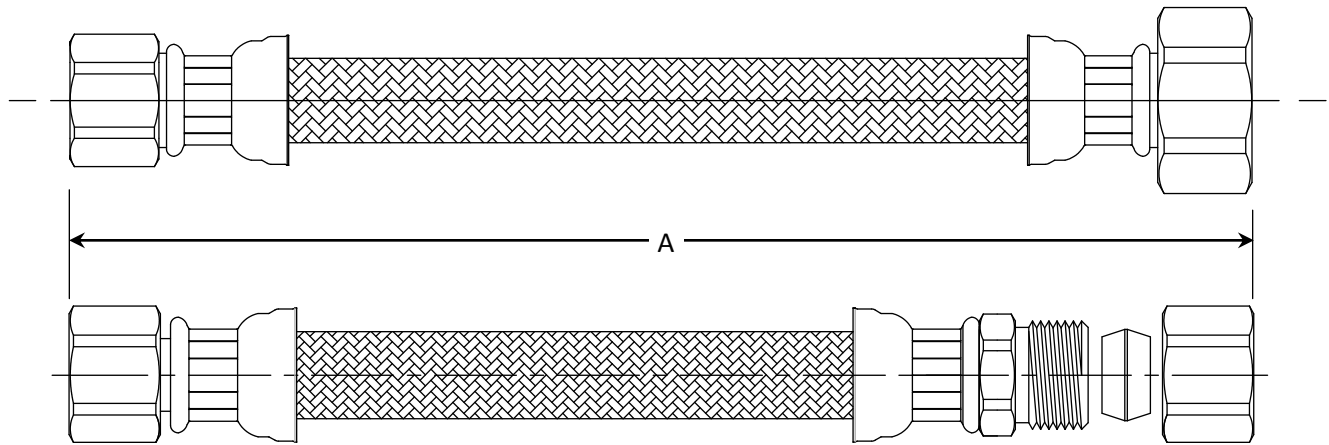
- S1-12A F 3/8" compression x 1/2" FIP x 12" length
- S1-12KC F 3/8" compression x 3/8" OD compression x 12" length
- S1-16A F 3/8" compression x 1/2" FIP x 16" length
- S1-20A F 3/8" compression x 1/2" FIP x 20" length
- S1-20KC F 3/8" compression x 3/8" OD compression x 20" length
- S1-30A F 3/8" compression x 1/2" FIP x 30" length
- S8-12A F 1/2" FIP x 1/2" FIP x 12" length
- S8-16A F 1/2" FIP x 1/2" FIP x 16" length
- S8-20A F 1/2" FIP x 1/2" FIP x 20" length
- S8-30A F 1/2" FIP x 1/2" FIP x 30" length

This specification and all information contained herein is the confidential and exclusive property of BrassCraft Manufacturing, and shall not be disclosed to others without the written consent of BrassCraft Mfg. This specification must be returned to BrassCraft Mfg if requested.



S1-**A Stainless Steel Flexible Braided Faucet Water Connector - Compression Inlet

PART DIMENSIONS (Inches)	
Model	DIM. A
S1-12A	12.0 / 13.0
S1-12KC	12.0 / 13.0
S1-16A	16.0 / 17.0
S1-20A	20.0 / 21.0
S1-20KC	20.0 / 21.0
S1-30A	30.0 / 31.0
S8-12A	12.0 / 13.0
S8-16A	16.0 / 17.0
S8-20A	20.0 / 21.0
S8-30A	30.0 / 31.0



“KC” option shown

Listings & Certifications:

- CSA listed to ASME A112.18.6 and CSA B125.6 (File #204593)
- IAPMO listed to ASME A112.18.6 and CSA B125.6 (File # 0452)
- No Lead product CSA listed to Low Lead Content Certification Program – Plumbing Products Class 6853-01
- Tubing material is formulated with food grade ingredients and certified by NSF to standard 51 Food Equipment Materials



This specification and all information contained herein is the confidential and exclusive property of BrassCraft Manufacturing, and shall not be disclosed to others without the written consent of BrassCraft Mfg. This specification must be returned to BrassCraft Mfg if requested.

BrassCraft[®]