

Central Brass

C O M P A N Y

Brecksville, Ohio 44141

Phone: (216) 883-0220 Fax: (440) 526-5745

www.CentralBrass.com

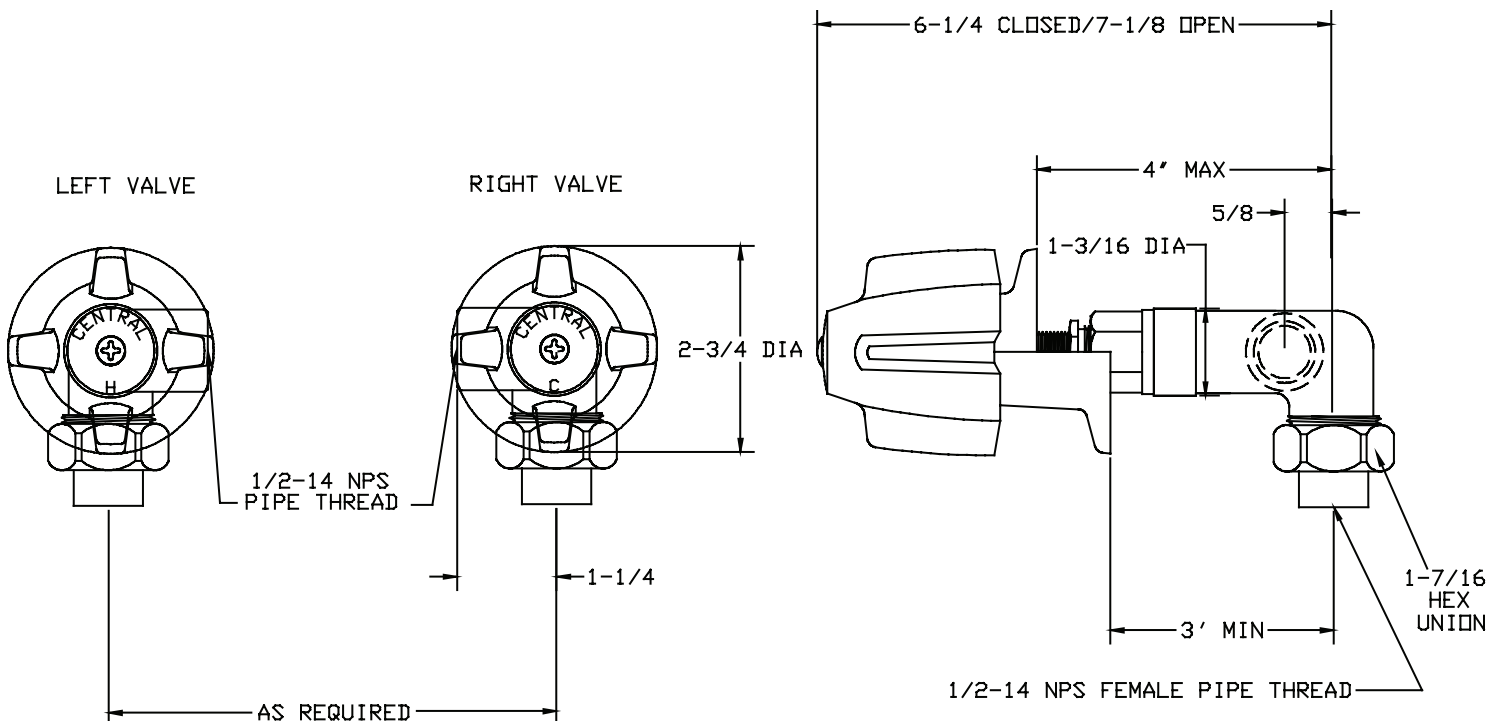
**MODEL NO. 1246
SHOWER VALVE**

The shower valve has a heavy pattern cast brass body with a replaceable seat. All internal metal parts are brass. The packing is a reinforced rubber material and the seat washer is rubber. The shower valve is provided with a threaded escutcheon for trim location. The exposed trim is zinc die cast and has a polished chrome plated finish. The handle is indexed for hot or cold supply. The valve has 1/2 - 14 NPSF (dryseal) female union, copper sweat unions are available with C suffix.

ASME A112.18.1M



Installation Drawing



Central Brass

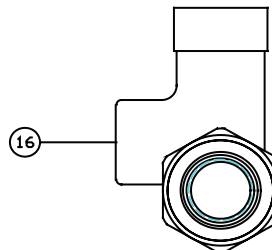
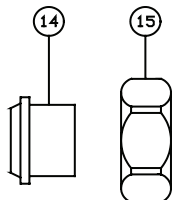
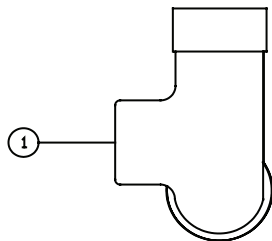
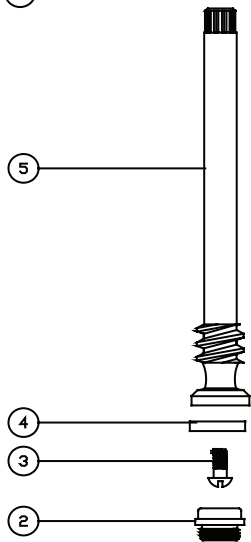
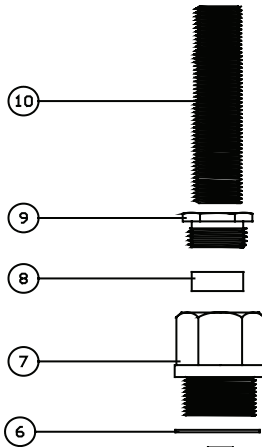
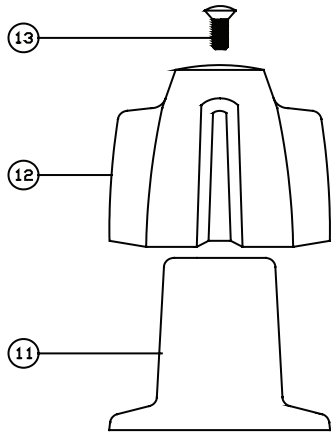
C O M P A N Y

Brecksville, Ohio 44141

Phone: (216) 883-0220 Fax: (440) 526-5745

www.CentralBrass.com

**MODEL NO. 1246
SHOWER VALVE**



Parts Breakdown

#	Part #	Description
1	1590-L	Brass Left Body
2	165	Brass Seat
3	105	Brass Screw
4	913-N	Seat Washer
5	1548-BSP	Brass Stem
6	402-A	Fiber Washer
7	1549	Brass Bonnet
8	814-BARP	Packing
9	765-TA	Brass Packing Nut
10	269-29/16	Brass Threaded Nipple
11	521-B	Escutcheon
12	508-C	Handle Indexed "C"
12	508-H	Handle Indexed "H"
13	107-F	Brass Phillips Head Screw
14	1875	Brass Union
15	1876-BB	Brass Coupling
16	1590-R	Brass Right Body

The parts listed in the parts breakdown above may not be offered separately as replacement parts. Please review the Replacement Parts page for the authorized replacement parts that are available for this item.